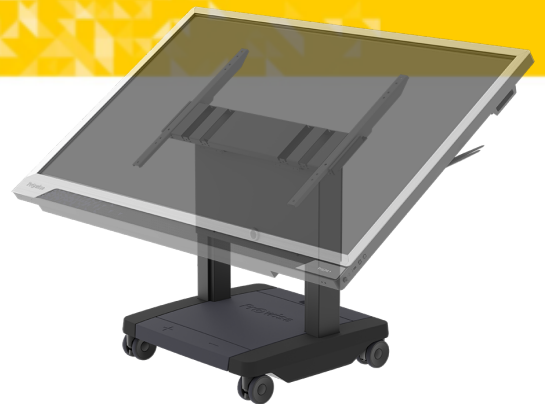


Prowise iPro Toddler Lift

Adjust height and angle of the touchscreen and move it to any location.
Due to the tilt option the touchscreen can also be used as a touch table.
The Tilt/Toddler Lift is able to descend such that even the shortest students can participate.



iPro Toddler Lift PW.1.21007.0002

Suitable for	Prowise touchscreens up to 65 inch, Maximum dimensions VESA mount 800 x 600 mm
Dimensions ground surface (WxDxH)	690 mm x 690 mm x 160 mm
Maximum load	75 kg
Speed of the lift	38 mm /s
Power	100-240V AC 50-60Hz (universal)
Stand-by power consumption	0,1 Watt
Duty cycle columns	5%
Soft-start and soft-stop	Yes
Noise level	Low, standard < 55 dB (A)
Protection against overload (EOP)	Yes
Columns with integrated anti-collision sensors	Yes, PIEZO™ sensoren
Material	Steel/ABS
Colour	Steel = RAL 9005 / ABS = anthracite/black
Touchscreen control via Prowise Central	Yes, USB connection
Foot controller	Yes
Remote control	Yes
Wheels	Double safety wheels, 100 mm, made of polyamide
Certifications	CE
Warranty	5 year

Gross weight

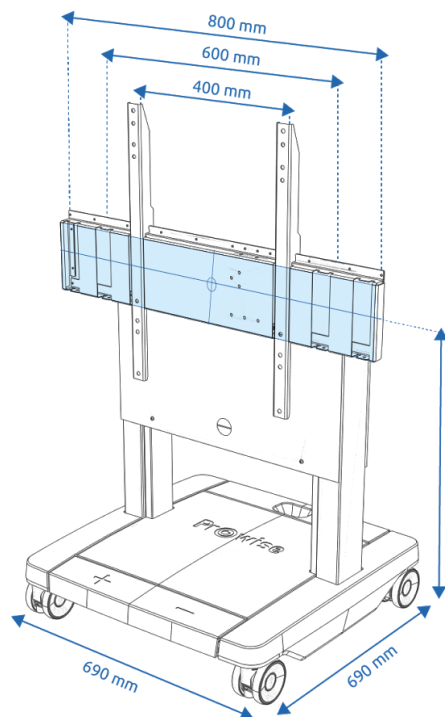
64 kg

Net weight

55 kg

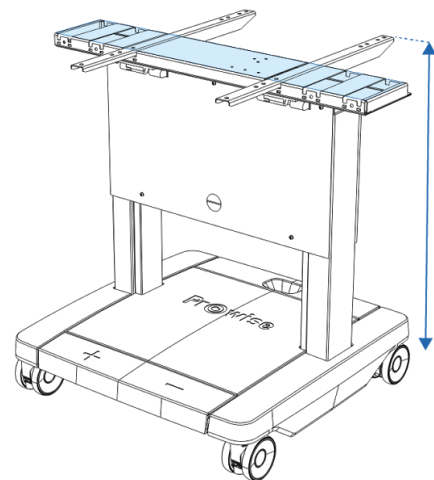
Dimensions of the total packaging (WxDxH)

887 mm x 712 mm x 780 mm



Toddler Lift
653 - 1313 mm

Tilt Lift
835 - 1635 mm



Toddler Lift
630 - 1290 mm

Tilt Lift
812 - 1612 mm